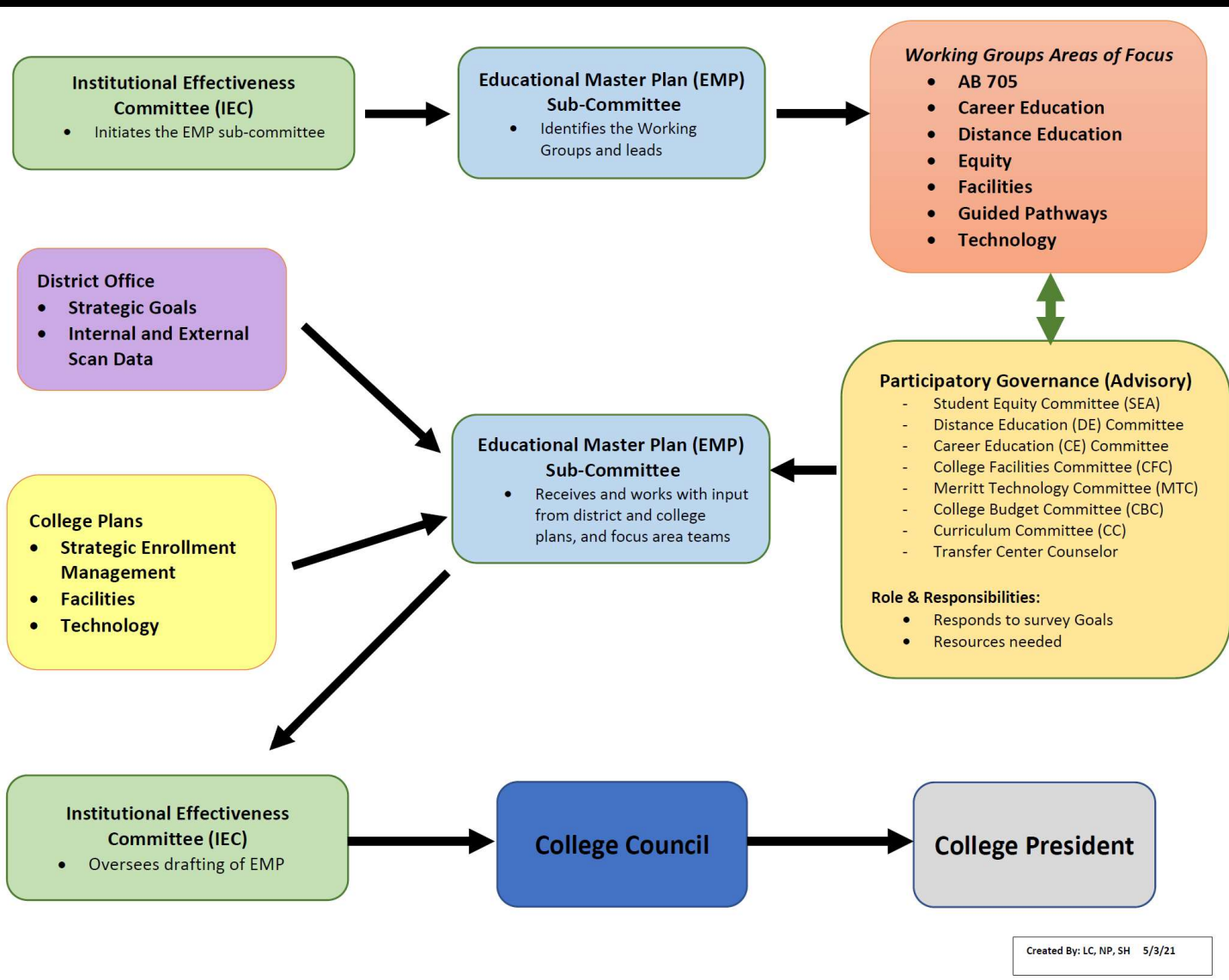




Merritt College

Education Master Plan (EMP)



Focus Area Teams

Area	Team Members
AB 705 Impact	Dan Lawson, Lisa Webb, Evan Nichols
Career Education	Marie Amboy, Feather Ives
Distance Education	Denise Richardson
Equity	Denise Richardson, Lisa Webb
Facilities	Tara Marrero, Jason Holloway
Guided Pathways	Feather Ives, Jason Holloway, Jamila Saleh
Technology	Lilia Chavez, Nathan Pellegrin

Core Outline of the EMP

- College Mission, Vision and Values
- Internal and External Scan (2020 Census)
- Enrollment Forecasting
- Strategic Directions
- Continuous Improvement and Institutional Effectiveness
- Challenges and Opportunities

EDUCATIONAL MASTER PLAN (EMP) AREA OF FOCUS: FACILITIES

PRESENTED BY

TARA MARERO – DIRECTOR OF FACILITIES

JASON HOLLOWAY – CO-CHAIR HEALTH AND SAFETY COMMITTEE

GUIDING DOCUMENTS – FACILITIES AREA OF FOCUS

PCCD Facilities Master Plan

Merritt College Facilities Master Plan

PCCD Educational Master Plan

Merritt College Educational Master Plan

Merritt College Program Reviews / Annual Program Updates

PRIORITIES FOR FACILITIES OVER THE NEXT 5 YEARS

- Align and prepare facilities to match 5-year master plans currently in place
- Prepare campus facilities for post COVID operations
- Construct new buildings that align to the 5-year master plan (Child Development Center and Landscape Horticulture Facility / Closing out Building A and existing Horticulture buildings
- Submit new project proposals to the state to optimize land use of lot B

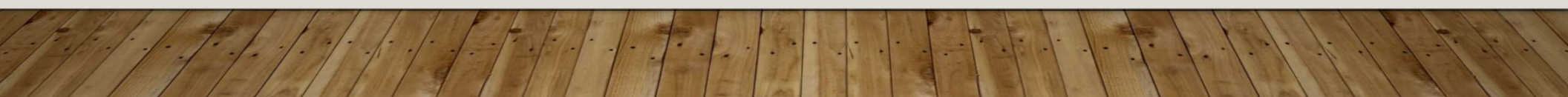
FACILITIES SMART GOALS:

- Review / Update guiding documents for facilities improvements to reflect best practices in industry standards in shared governance committees (College Educational Master Plan, Facilities Plan, Program Reviews) – review best practices from 2021 or more recent to be implemented in above documents.

To be completed on an annual basis

- Establish a prioritization list (through shared governance) of facilities upgrades and renovations that support student safety and enrollment. Update facilities that are in need of upgrades to be compliant with most current COVID – 19 safety protocols

To be completed on an annual basis



RESOURCES / SUPPORT NEEDED:

- State funding to support additional anticipated upgrades
- Industry Partner / Community Partnerships to support facility upgrades
- Support from shared governance bodies – be placed as standing item on governance agendas

- Overview/Data of Career Education Programs at Merritt College
- Success/Completion/Job Placement rates
 - Goal: Auto-awarding?
- Data-Driven planning
 - Labor Market Information
 - Advisory Councils
 - Role of BACCC
 - Merritt/District CE Committees
- Critical CE Funding
 - Strong Workforce Program - Local and Regional
 - Overview and Metrics
 - Key expenditures/investments made
 - Federal Perkins V
 - Overview and Core Indicators
 - Key expenditures/investments made
 - CVC-OEI
 - Overview and goals
 - Incorporation of Peralta Equity Rubric
- Role of the CE Liaison
- Vision for CE in the next 5 years

Technology themes supporting the EMP



- In alignment with the district five-year technology plan
- IT Budget oversight – ensure a sustainable budget by tracking historical technology spending
- Adequate IT staffing (supporting Instruction, Student Services and Administrative Services)
- Refresh cycle (college wide)
- Instructional Technology (SMART classrooms)
- Technology Project Management
- Inventory software to assess utilization and ROI
- Fully leverage current systems (i.e., PeopleSoft)
- Professional Development
- Enrollment Management
- Data Integrity (maximize SCFF)

The background features a decorative graphic consisting of several overlapping, wavy lines in shades of light blue and light green. These lines curve across the top and right sides of the page, creating a sense of movement and depth. The text is centered in the lower-left quadrant of the page.

EMP and Guided Pathways



GP Core Team / Pillar Team Leads

Core Team

Dr. Denise Richardson – Administrative Lead

Jason Holloway – Administrative Lead

Feather Ives – Faculty Lead

Jamila Saleh – Classified Lead

Margie Rubio Classified Lead

Nathan Pellegrin – Researcher

Pillar Team Leads

1. Clarify the Path – Nghiem Thai
2. Enter the Path – Mary Ciddio
3. Stay on the Path – Tauheeda Anderson
4. Ensure Learning – John Rodriguez

Guiding Documents

STATE CHANCELLORS VISION FOR SUCCESS

REDESIGNING AMERICA'S COMMUNITY COLLEGES

COLLEGE EMP

GP SCALE OF ADOPTION SELF-ASSESSMENT (SOAA)

TECHNOLOGY PLANS

AB 705 TEXT

PARTICIPATORY GOVERNANCE HANDBOOK

Five-Year Priorities for GP

1. INSTITUTE SOAA REFORMS AND MOVE METRICS FROM NOT AT SCALE/SCALING TO AT SCALE.
2. FULLY BRING TO SCALE THE META-MAJORS/AREAS OF INTEREST (AOI).
3. IMPROVE RETENTION OF STUDENTS FROM 1ST TO 2ND YEAR.
4. EMBED GUIDED PATHWAYS PRINCIPLES IN SHARED GOVERNANCE COMMITTEE WORK
5. INCREASE EFFECTIVENESS OF SYSTEMS TO SUPPORT GUIDED PATHWAYS GOALS
(E.G. AUTO-AWARDING, EARLY ALERT, BETTER SEARCH ENGINE, MYPATH, USER-FRIENDLY ENROLLMENT).
6. DEVELOP COMPLETION PATHWAYS FOR PART-TIME STUDENTS.

GP Pillar SMART Goals

1. CLARIFY THE PATH

- CURRICULUM UPDATES – REVIEWING PROGRAMS AND COURSE UPDATES (UPDATE ALL ACTIVE COURSES AND PROGRAMS)
- ONLINE DE ADDENDUM FOR CONVERTED ONLINE COURSES
- AREAS OF INTERESTS – BUY-IN AND TRAINING IN THE AREAS OF INTEREST FOR ALL STAKEHOLDERS
- IDENTIFY CAREER PATHWAYS AND TRANSFER PATHWAYS FOR BOTH CE AND NON-CE PATHWAYS. TRAINING ON NON-TRANSFER CAREER PATHWAYS. (O*NET TRAINING)

GP Pillar SMART Goals

2. ENTER THE PATH

- INTEGRATING AREAS OF INTERESTS INTO THE COLLEGE WEBSITE FRAMEWORK
- INTEGRATING MYPATH INTO THE WEBSITE FRAMEWORK
- MARKETING AND EFFECTIVE ROUTING OF PROSPECTIVE STUDENT CONCERNS AND INQUIRIES
- ADDITIONAL SPECIALIZED CE COUNSELORS TO ASSIST STUDENTS IN ENROLLING

GP Pillar SMART Goals

3. STAY ON THE PATH

- TARGETED IN-REACH TO WORK WITH 1ST YEAR STUDENTS
- ENROLLMENT MANAGEMENT TO ENSURE COURSE OFFERING AVAILABLE FOR COURSE COMPLETION 1,3,2,4 SCHEDULE OFFERINGS
- SCHEDULING TOOL – TASSEL SOFTWARE – DEGREE PLANNING
- INCREASE SUCCESS IN TRANSFER LEVEL MATH AND ENGLISH COURSES
- UTILIZE CCSSE SURVEY TO GATHER STUDENT CONCERNS AND HOW THEY ARE BEING ADDRESSED

GP Pillar SMART Goals

4. ENSURING LEARNING

- STUDENT LEARNING OUTCOMES ASSESSMENT / PROGRAM LEARNING OUTCOMES ASSESSMENT
- CE ADVISORY BOARDS / LABOR MARKET INFORMATION ALIGNS WITH CURRICULAR OBJECTIVES /
- PROGRAM VIABILITY PLANS
- PERALTA ONLINE EQUITY RUBRIC
- STUDENT BIASES INVENTORY

GP Pillar SMART Goals

WHAT RESOURCES DO WE NEED TO REALIZE THESE GOALS?

- STATE FUNDING TO SUPPORT ADDITIONAL ANTICIPATED UPGRADES
- INDUSTRY PARTNER / COMMUNITY PARTNERSHIPS TO SUPPORT FACILITY UPGRADES

IF MORE CONVERSATION OR PRE-PLANNING SHOULD BE CONDUCTED FOR YOUR AREA, WHAT ACTIVITIES OR MEETINGS NEED TO BE ENGAGED?

- SUPPORT FROM SHARED GOVERNANCE BODIES – STANDING ITEM ON GOVERNANCE AGENDA
- SYSTEM TO IDENTIFY SHARED GOVERNANCE COMMITTEE MEMBERS WHO ADVOCATE FOR GP INITIATIVES



Questions or Interest?

Jason Holloway

jholloway@peralta.edu

Feather Ives

Fives@peralta.edu

Jamila Saleh

jsaleh@peralta.edu



Call for Participation

--Chair

--Focus area teams