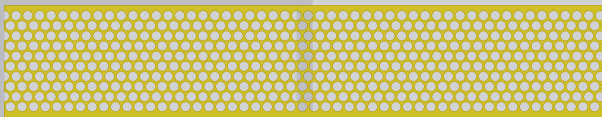
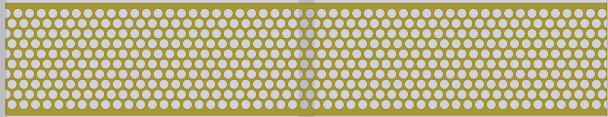
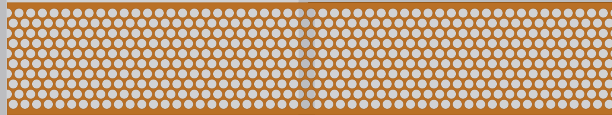
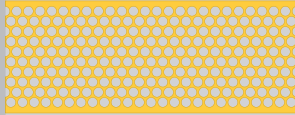


BARBARA LEE

SCIENCE & ALLIED HEALTH CENTER

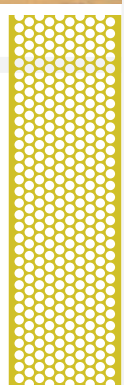
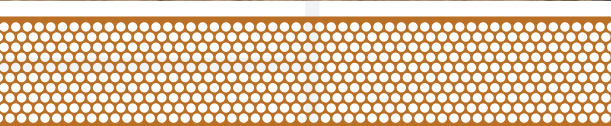
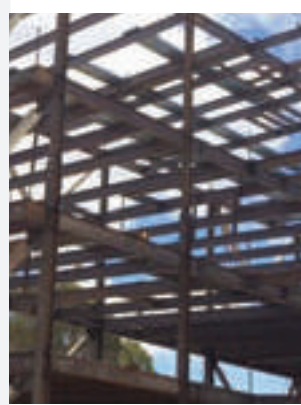
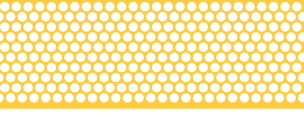


Merritt College
12500 Campus Dr.
Oakland, CA 94619
www.merritt.edu
(510) 531-4911

COMMUNITY COLLABORATION

Merritt College's dream of having one of the most advanced science centers of any California community college became a reality when Alameda County voters passed the \$350 million Measure A in 2006 with an overwhelming 74.7 percent, led by the support of Congresswoman Barbara Lee (D-Oakland). That vote for the sale of bonds, one of the highest support rates for a community college bond measure in the state, benefited all four colleges of Peralta Community College District.

For Merritt, it would transform a hilly, undeveloped corner of the campus into a 110,000 square-foot structure that will take the college and its students into the cutting-edge future of health and science. Students, faculty, staff, and community members were given the opportunity to share their thoughts with the PCCD Board of Trustees and gave their enthusiastic approval for construction to begin.



GRAND CELEBRATION

On a sunny November day, hundreds of people poured onto the Merritt College campus to celebrate the opening of the Barbara Lee Science and Allied Health Center, including, of course, the building's namesake herself. "It's an honor to have my name on this building," said Congresswoman Lee to an enthusiastic crowd of employees, trustees, friends and family, and dignitaries she has worked with. "We are preparing students for jobs that exist today and assuring that industries of the future will be diverse."

A letter from President Barack Obama was read by Trustee Meredith Brown, thanking Congresswoman Lee for her leadership and applauding the District for sharing in America's promise to "bolster the commitment to higher education and ensure that our country remains in the forefront of progress."

After the ceremony, guests were offered tours of the four-story building which earned a LEED Gold Certification for being environmentally friendly. Project completion was "on time and on budget," according to Vice Chancellor of General Services Sadiq Ikharo, who oversaw the project, allowing students to start the Fall 2015 Semester on the first day!

"We are proud to support an environment that focuses on STEM education and healthcare training as critical components to our 21st century learning and that all students have access to these high-quality learning opportunities. They will be well prepared for the most pressing challenges facing our community."

— *Dr. Norma Ambriz-Galaviz, Merritt College President*

"The spirit in which this building is dedicated and the person we are honoring are our champions in the war on poverty because education is one of the cornerstones of that war. And what we are doing is helping our students and our community thrive and reach their full potential. That is what our battle is about."

— *Meredith Brown, PCCD Trustee*

"We are proud to dedicate this wonderful facility to all the contributions Barbara Lee has made—not only to our District, not only to the Congressional District she represents, not only to the State of California, not only to the United States of America, but to the world."

— *Dr. Jewel C. Laguerre, PCCD Chancellor*

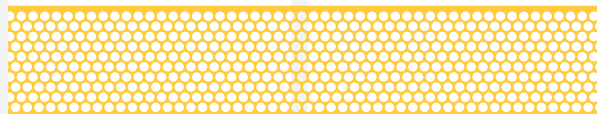
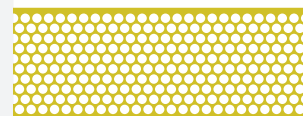
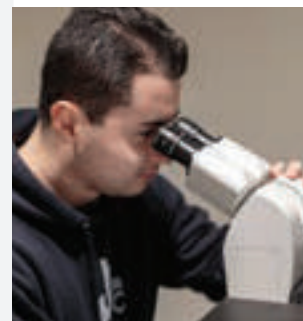


PCCD Trustee Linda Handy, Chancellor Jewel C. Laguerre, Congresswoman Barbara Lee, and Merritt College President Norma Ambriz-Galaviz take a tour of the building.



NEW DISCOVERIES

The advanced technology and state-of-the-art equipment spread out among the classrooms and labs in the college's new landmark structure had been in the planning stages years before the first shovel hit the dirt. Faculty played a major role in assisting the architects to design their own facilities by touring other colleges and healthcare facilities throughout the Bay Area and borrowing the best ideas from each. "There is no teaching institution of this quality in the Bay Area," says longtime instructor Ray Chamberlain, shown below in his new organic chemistry lab. "Plus we have the best view!"



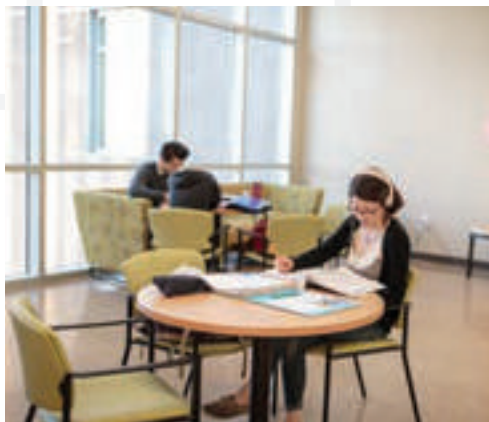
Classes in the Barbara Lee Science & Allied Health Center

- Astronomy
- Biology
- Chemistry
- Emergency Medical Technician
- Genomics
- Geography
- Geology
- Histotechnology
- Math
- Medical Assisting
- Microscopy
- Nursing
- Nutrition and Dietetics
- Physics
- Radiologic Science



INNOVATIVE DESIGN

The building's unique design was created to serve as a gateway to the campus and enhance learning, promote growth, and bring about opportunities for communication. Colorful screens not only defray heat but represent a genetic code as does the "double helix DNA" spiral staircase that divides the building. Comfortable "Learning Neighborhoods" were planned throughout the building for students to study or interact; and the building's fourth floor "Front Porch" was designed to offer a spectacular view of the Merritt community and beyond.



CAREER PATHWAYS

Many of the disciplines housed within the Barbara Lee Science and Allied Health Center are considered Career and Technical Education (CTE) programs. That means that these programs and course offerings give students the opportunity to learn the modern technologies, skilled trades, and applied sciences that are most likely to lead to high-demand employment. Their hands-on learning experiences with industry-specific technology, tools, and equipment prepare them for jobs in growth industries now and in the future.

ALLIED HEALTH

Emergency Medical Technician

Offers a semester-long certificate program of life-saving skills to prepare for national certification.

Medical Assisting

Places students in hands-on externship programs in hospitals or clinics that can lead to full-time jobs.

Nursing

Uses state-of-the-art facilities including the Simulation (SIM) Lab to imitate real-life symptoms and diseases.

Nutrition & Dietetics

Gives experience in shiny new commercial-like kitchen to become dietary managers or earn a degree in dietetic technology.

Radiologic Science

Teaches students to assist physicians in diagnosing injuries and disease with detailed images of the human body.

BIOSCIENCES

Genomics

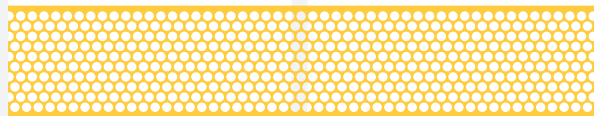
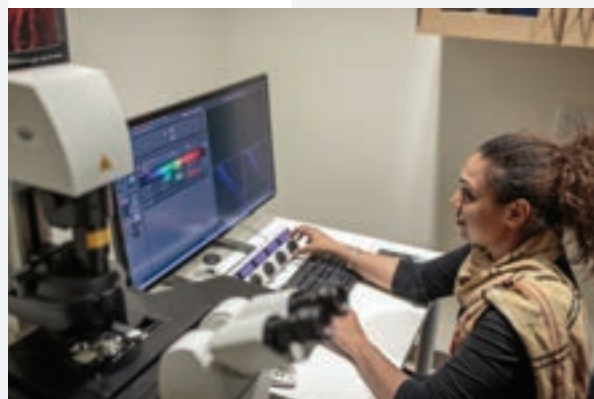
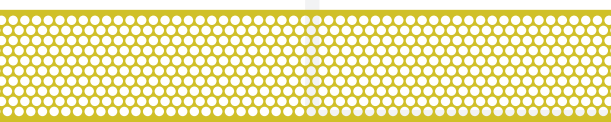
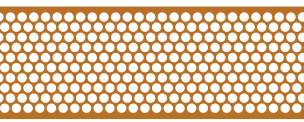
Involves the sequencing and analysis of an organism's DNA content; leads to high-paying jobs in the biosciences.

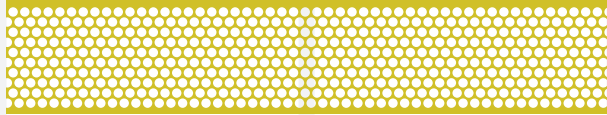
Histotechnology

Provides highly sought-after technical training to prepare tissue sample and stains that confirm patient diagnosis for doctors.

Microscopy

Uses advanced equipment, including the high-resolution confocal microscope, to train students for in-demand jobs in Bay Area biotech companies.





GETTING AROUND

1st FLOOR

Genomics
Histotechnology
Microscopy

2nd FLOOR

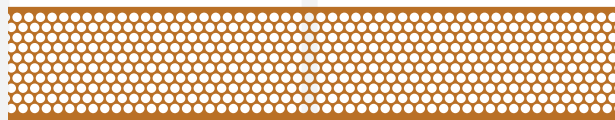
Astronomy
Biology
Geography
Geology
Physics

3rd FLOOR

Emergency Medical Technician
Medical Assisting
Nursing
Nutrition & Dietetics
Radiologic Science

4th FLOOR

Biology
Chemistry
Math





**Peralta Community College
District Board of Trustees**

William “Bill” Riley, Ed.D., President

Julina Bonilla, Vice President

Meredith Brown

Cy Gulassa

Linda Handy

Bill Withrow

Nicky Gonzalez Yuen

Adrien Abuyen, Student Trustee

Brianna Rogers, Student Trustee

Dr. Jowel C. Laguerre, PCCD Chancellor

Dr. Norma Ambriz-Galaviz, Merritt President



The mission of Merritt College is to enhance the quality of life in the communities we serve by helping students to attain knowledge, master skills, and develop the appreciation, attitudes, and values needed to succeed and participate responsibly in a democratic society and a global economy.



Merritt College
12500 Campus Drive
Oakland, CA 94619
(510) 531-4911
www.merritt.edu